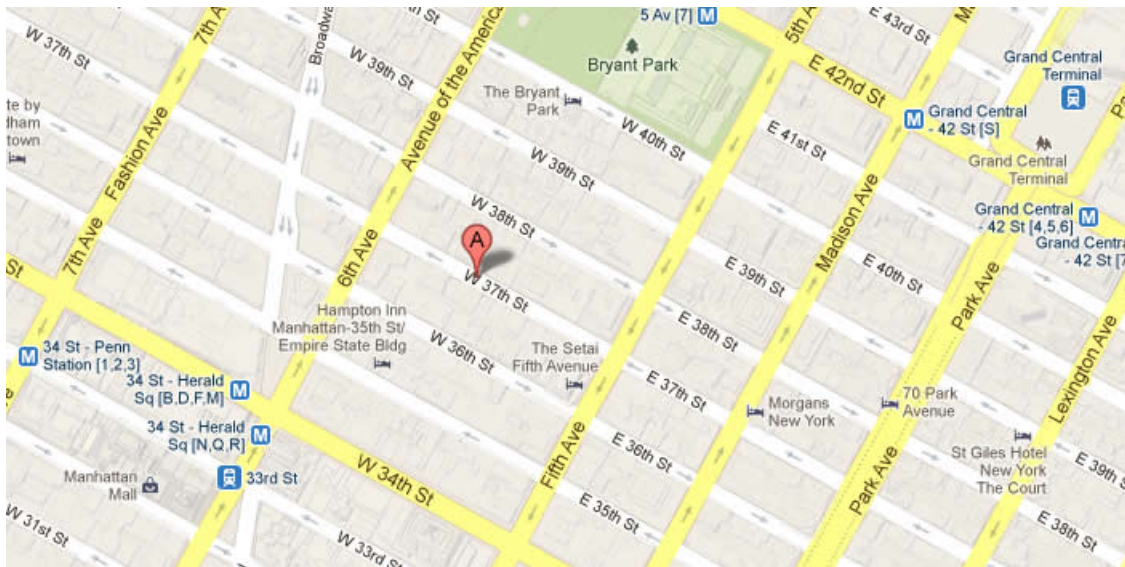




37 WEST 37TH STREET, New York, NY 10018



61722 SF

Up to 19,160 SF Available

Office building with modern marble lobby
and 24 hour access

Built: 1915 Architect: Herman Lee Meader

Tenants

E.W. HOWELL CO., LLC

EZRASONS, INC.

DWM DANCE STUDIO MIDTOWN LLC

KIM SEYBERT INC.

KW FASHION CORP.

For more information call

1- 212- 249- 1550

KOEPPPEL ROSEN

40 East 69th Street

New York, NY 10021

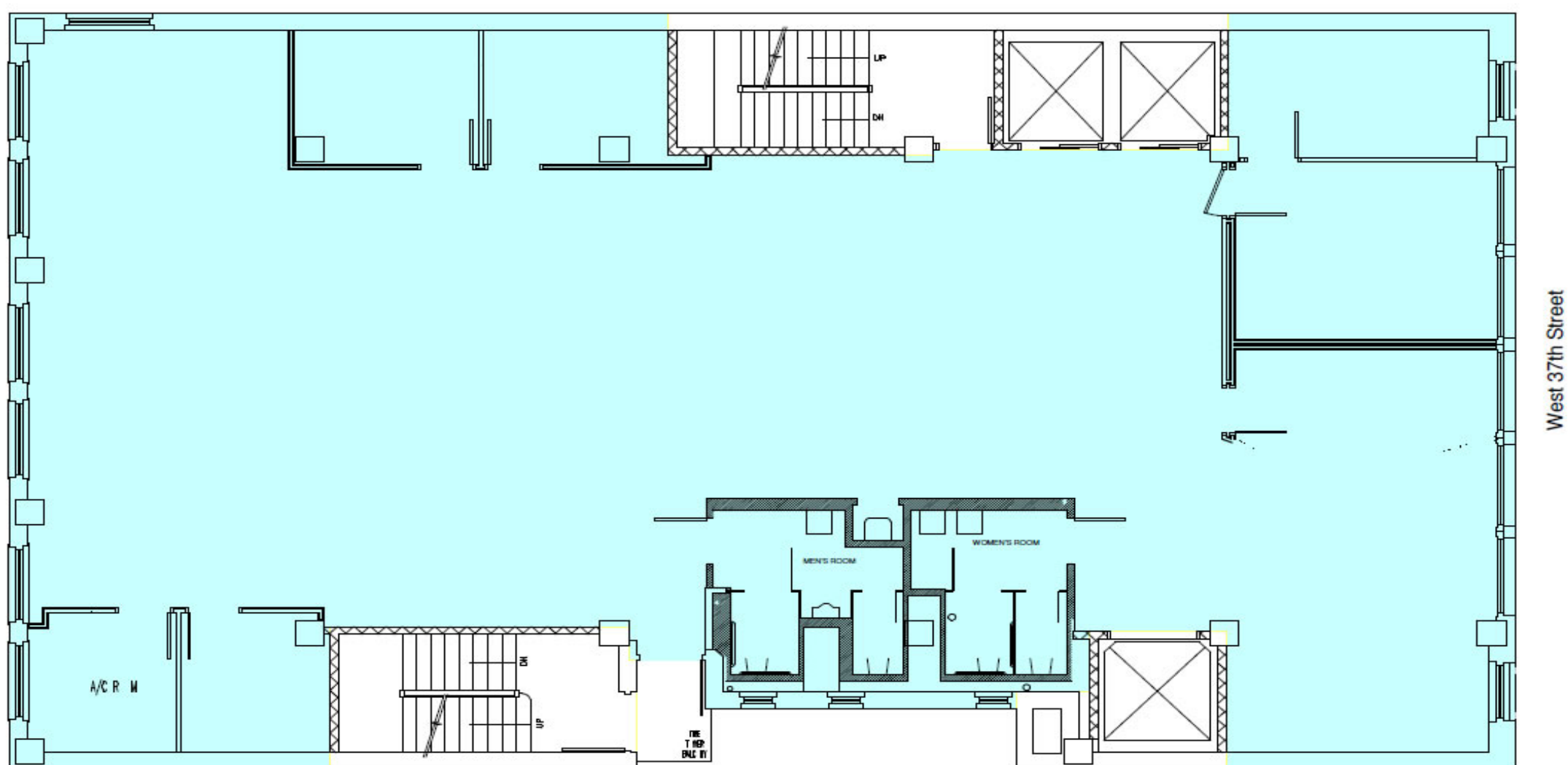
mkoeppeel@koeppelrosen.com



37 WEST 37TH STREET, New York, NY 10018

37 West 37th Street

Typical Floor Plan



Koeppel Rosen LLC

40 East 69th Street
New York, NY 10021
212-249-1550
www.koeppelrosen.com

Note: All dimensions and conditions are approximate and for information only

Scale: NTS

Date: February 10, 2016



For more information call

1- 212- 249- 1550

KOEPPEL ROSEN

40 East 69th Street

New York, NY 10021

mkoeppel@koeppelrosen.com