



39 WEST 19TH STREET, New York, NY 10011



128,657.00 SF

Up To 11,502 SF Available

Landmarked office building in Flatiron district

Built: 1911 Architect: Maynicke & Franke

#### Tenants

CHELSEA OFFICE PARK INC

LEFT/RIGHT, LLC

ULTRABLAND INC.

LEFT RIGHT, INC.

LEFT/RIGHT LLC

For more information call

1- 212- 249- 1550

KOEPEL ROSEN

40 East 69th Street

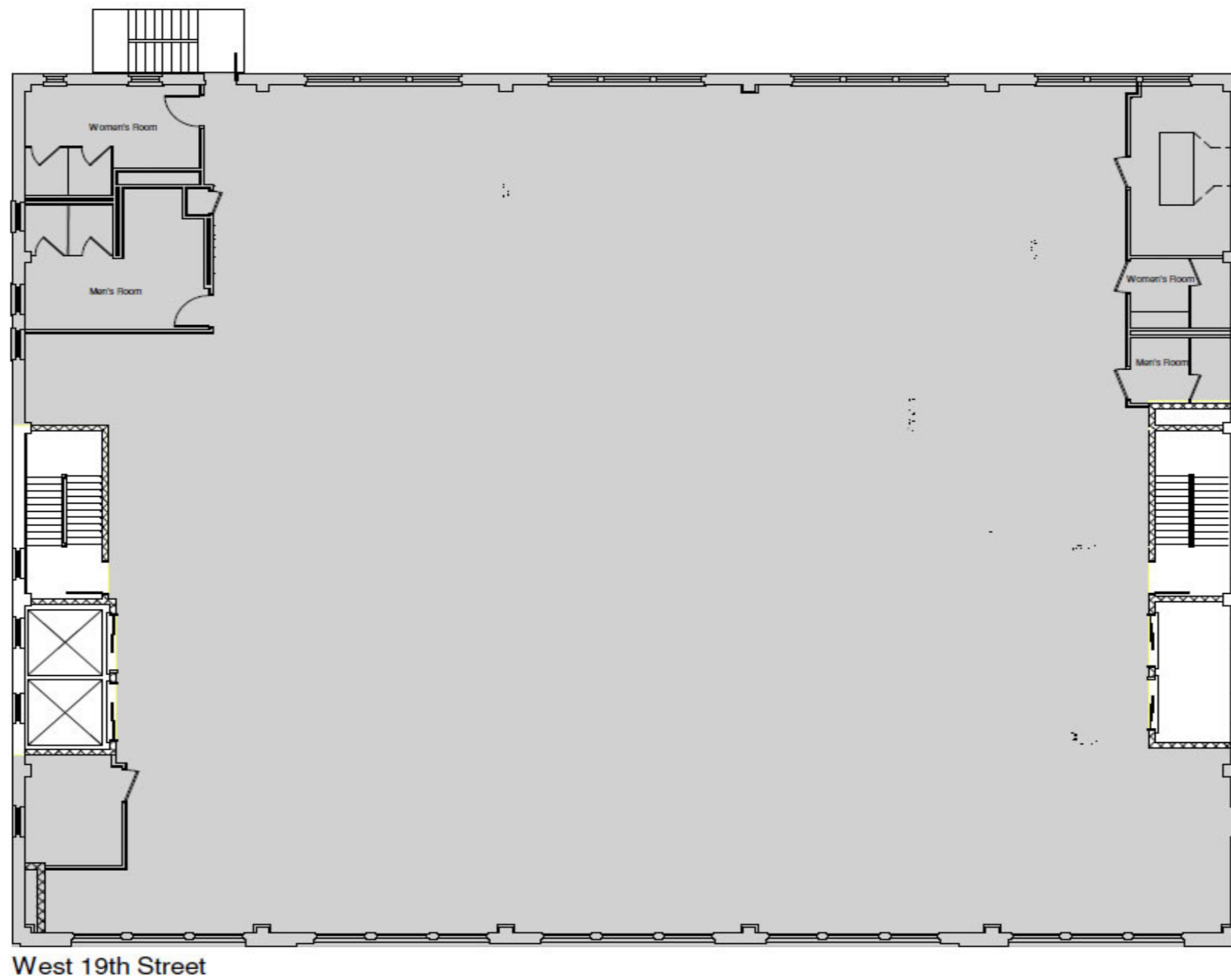
New York, NY 10021

[dkoeppel@koeppelrosen.com](mailto:dkoeppel@koeppelrosen.com)

39 WEST 19TH STREET, New York, NY 10011

### 39 West 19th Street

### Typical Floor Plan



West 19th Street



40 East 69th Street  
New York, NY 10021  
212-249-1550  
www.koeppelrosen.com

Note: All dimensions and conditions are approximate and for information only

Scale: NTS  
Date: February .18, 2016



For more information call  
1- 212- 249- 1550  
KOEPEL ROSEN  
40 East 69th Street  
New York, NY 10021  
dkoeppel@koeppelrosen.com