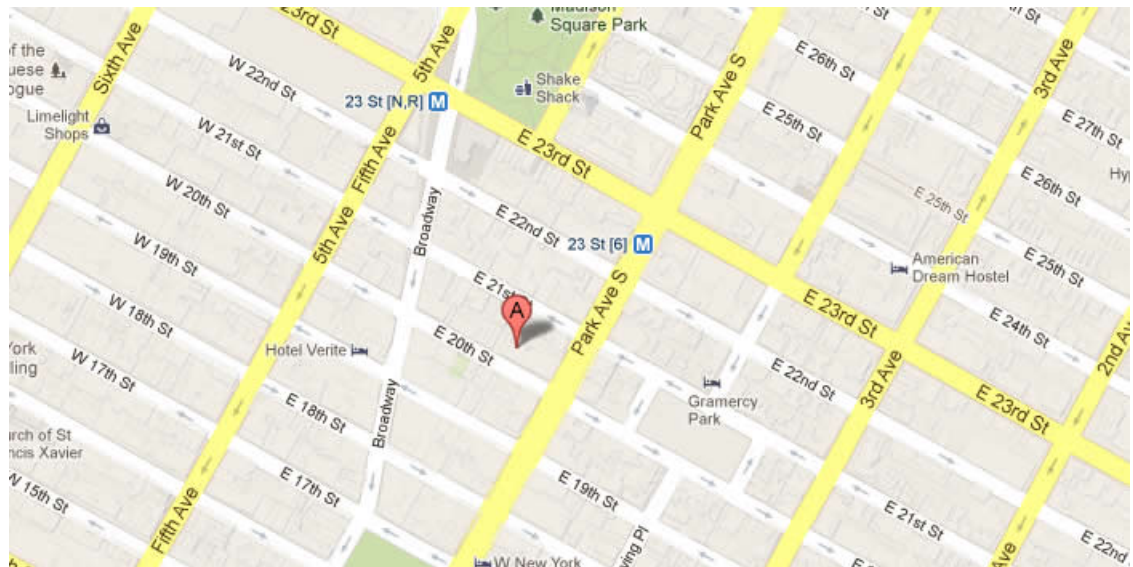




45 EAST 20TH STREET, New York, NY 10003



62856 SF

Up to 15,193 SF Available

Flatiron district office building with street-level retail with attended lobby , 24 hour access and easy access to Bus Lines, Metro/Subway
Built: 1911 Architect: Frederick C. Zobel

Tenants

2045 Studio, Inc.

JONATHAN KIRSCHENFELD

Majesty's Pleasure

Kids in the Game LLC

Octave Health Group, Inc.

For more information call

1- 212- 249- 1550

KOEPEL ROSEN

40 East 69th Street

New York, NY 10021

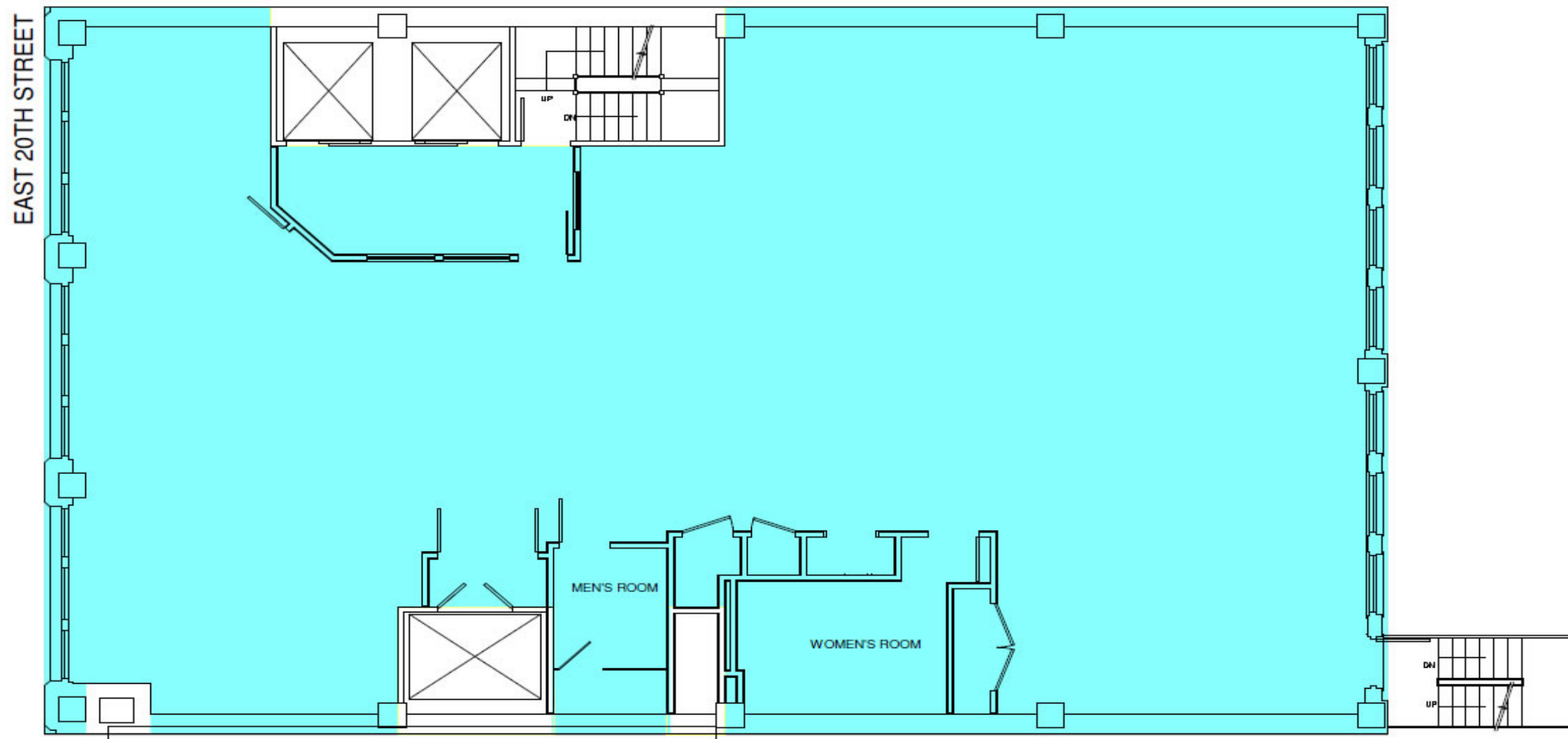
mkoepfel@koeppelrosen.com



45 EAST 20TH STREET, New York, NY 10003

45 East 20th Street

Typical Floor Plan



Koeppel Rosen LLC

40 East 69th Street
New York, NY 10021
212-249-1550
www.koeppelrosen.com

Note: All dimensions and conditions are approximate and for information only

Scale: NTS

Date: February 10, 2016



For more information call

1- 212- 249- 1550

KOEPEL ROSEN

40 East 69th Street

New York, NY 10021

mkoeppeel@koeppelrosen.com