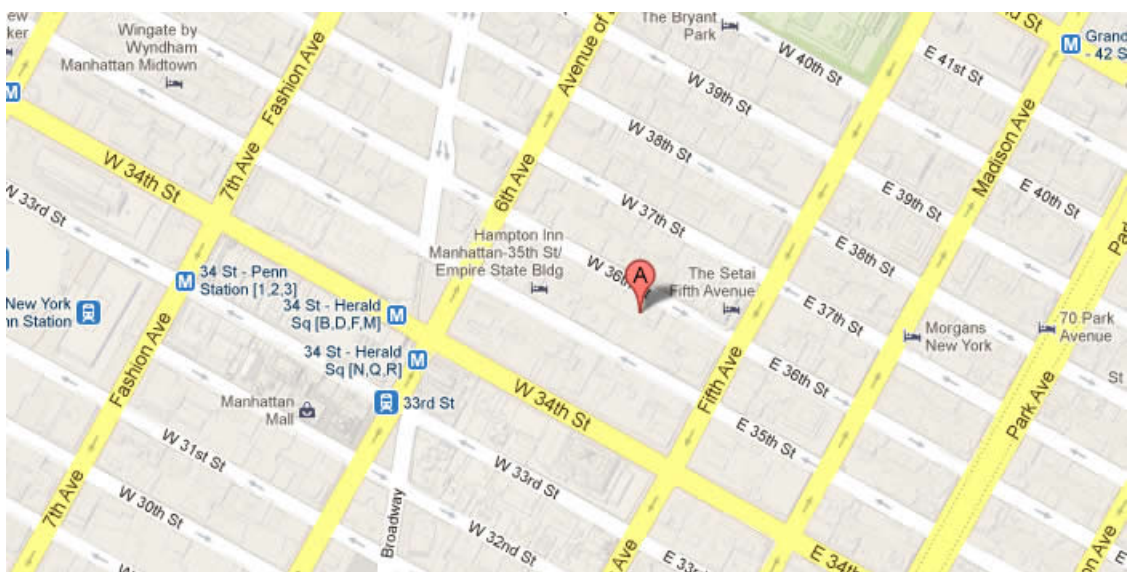




20 WEST 36TH STREET, New York, NY 10018



87264 SF

Up to 18,116 SF Available

Office building with attended lobby

24 hour access and is located steps away from the new Setai Hotel and 5th Ave

Built: 1911 Architect: Samuel Sass

Tenants

AMERICAN FRIENDS OF MAGEN DAVID ADOM

For more information call

1- 212- 249- 1550

KOEPEL ROSEN

40 East 69th Street

New York, NY 10021

mkoepfel@koeppelrosen.com

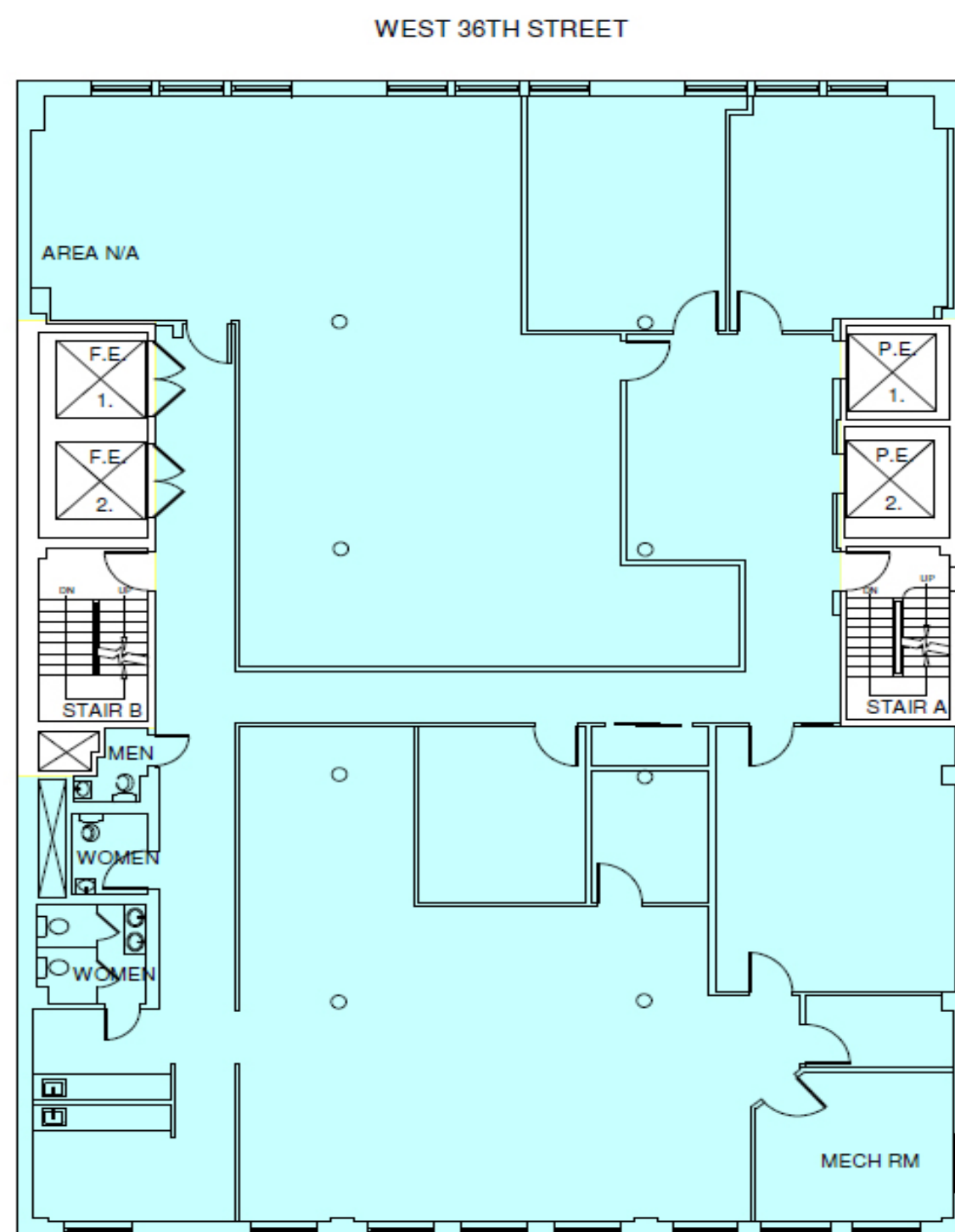


20 WEST 36TH STREET, New York, NY 10018

20 West 36th St



Typical Floor Plan



K R Koeppel Rosen LLC
40 East 69th Street
New York, NY 10021
212-249-1550
www.koeppelrosen.com

Note: All dimensions and conditions are approximate and for information only

Scale: NTS
Date: February .10, 2016



For more information call
1- 212- 249- 1550
KOEPPEL ROSEN
40 East 69th Street
New York, NY 10021
mkoeppel@koeppelrosen.com