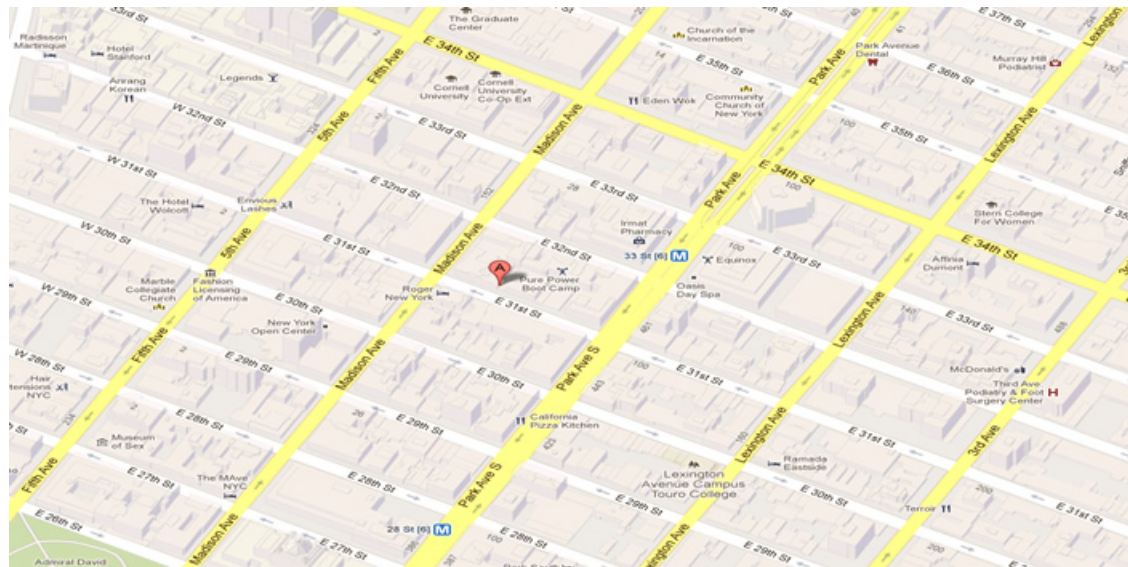




29 EAST 31ST ST, New York, NY 10016



14000 SF

Up to 5,700 SF Available

Office Building located in Murray Hill section of NYC

Built: 1920

Tenants

I.G. MOGHADAM RUG CORP.

JULIAN WALKER STUDIO LLC

TECHNETRON, INC

Flatiron/23rd Street Partnership District Manageme

For more information call

1- 212- 249- 1550

KOEPEL ROSEN

40 East 69th Street

New York, NY 10021

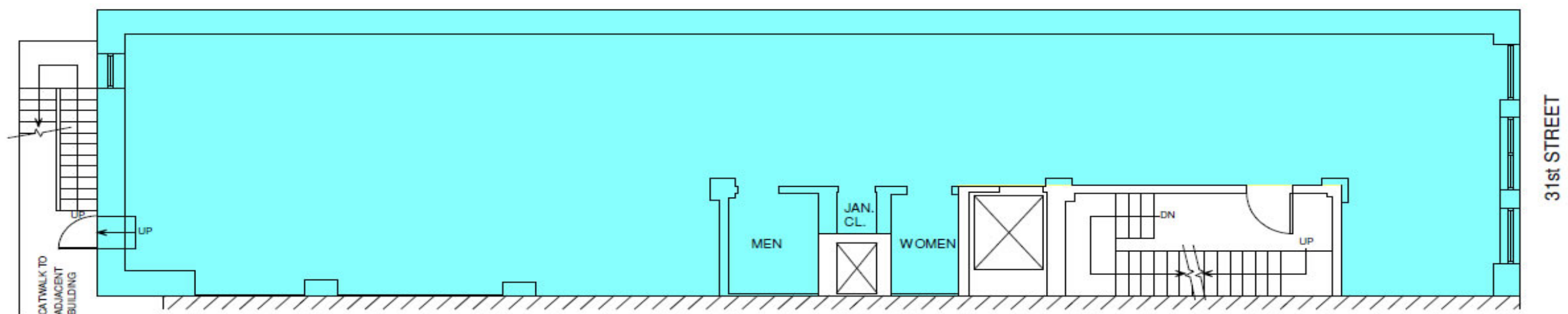
mkoepfel@koeppelrosen.com



29 EAST 31ST ST, New York, NY 10016

29 East 31st Street

Typical Floor Plan



K
R Koeppel Rosen LLC
40 East 69th Street
New York, NY 10021
212-249-1550
www.koeppelrosen.com

Note: All dimensions and conditions are approximate and for information only

Scale: NTS
Date: February 10, 2016



For more information call
1- 212- 249- 1550
KOEPPEL ROSEN
40 East 69th Street
New York, NY 10021
mkoeppel@koeppelrosen.com