



Rosen
Equities LLC

10 EAST 39TH STREET, New York, NY 10016



95364 SF

Up to 18,278 SF Available

Office building with street level retail

Lobby renovated and new elevator cabs installed in 2011

Built: 1915 Architect: Herman Lee Meader

Tenants

CHARM OFFICES LLC

Asia Food, LLC

MRMD CORP.

CJ Global Inc.

10 EAST COPIER INC.

For more information call

1- 212- 249- 1550

KOEPPEL ROSEN

40 East 69th Street

New York, NY 10021

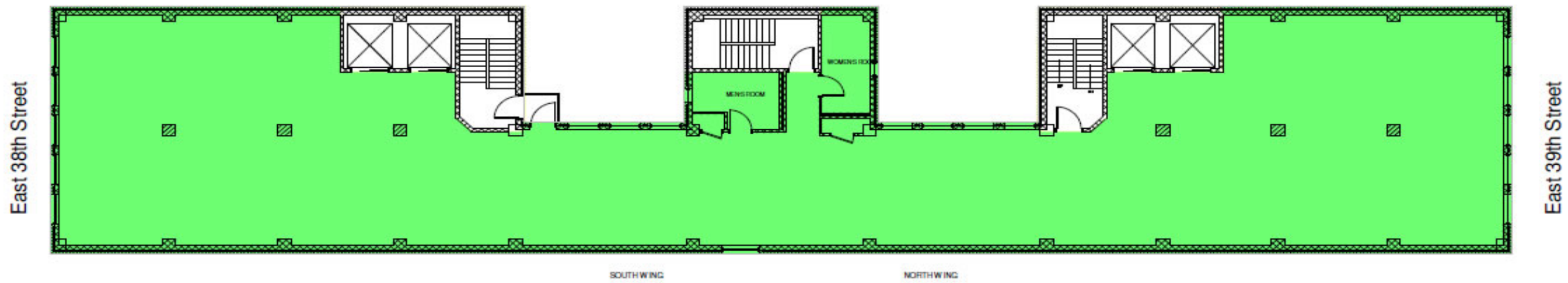
mkoeppeel@koeppeelrosen.com



10 EAST 39TH STREET, New York, NY 10016

10 East 39th Street

Typical Floor Plan



40 East 69th Street
New York, NY 10021
212-249-1550
www.koeppelrosen.com

Note: All dimensions and conditions are approximate and for information only

Scale: NTS
Date: February 2, 2016



For more information call
1- 212- 249- 1550
KOEPEL ROSEN
40 East 69th Street
New York, NY 10021
mkoeppel@koeppelrosen.com