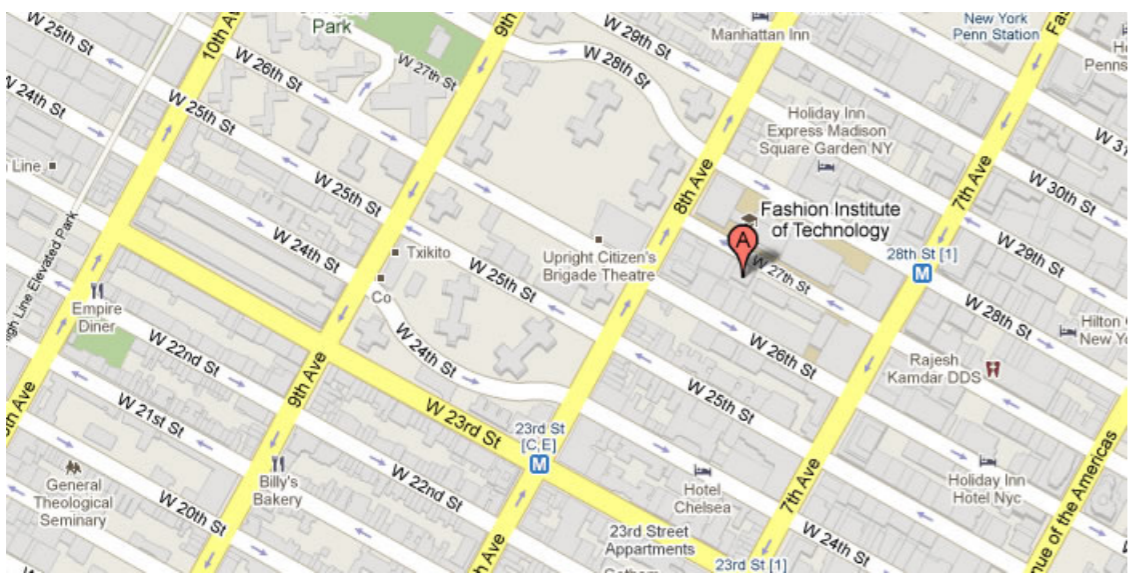




236 WEST 27TH STREET, New York, NY 10001



124588 SF

Up to 16,343 SF Available

Office building with street-level retail featuring 24/7 building access, modernized lobby and easy access to Bus Lines, Metro/Subway  
Built: 1928 Architect: William I. Hohaus

#### Tenants

EDWARD F BOWES

Buzok Flowers, LLC

JANE PACKER

Mediakite Corp.

Manhattan Institute for Psychoanalysis

For more information call

1- 212- 249- 1550

KOEPEL ROSEN

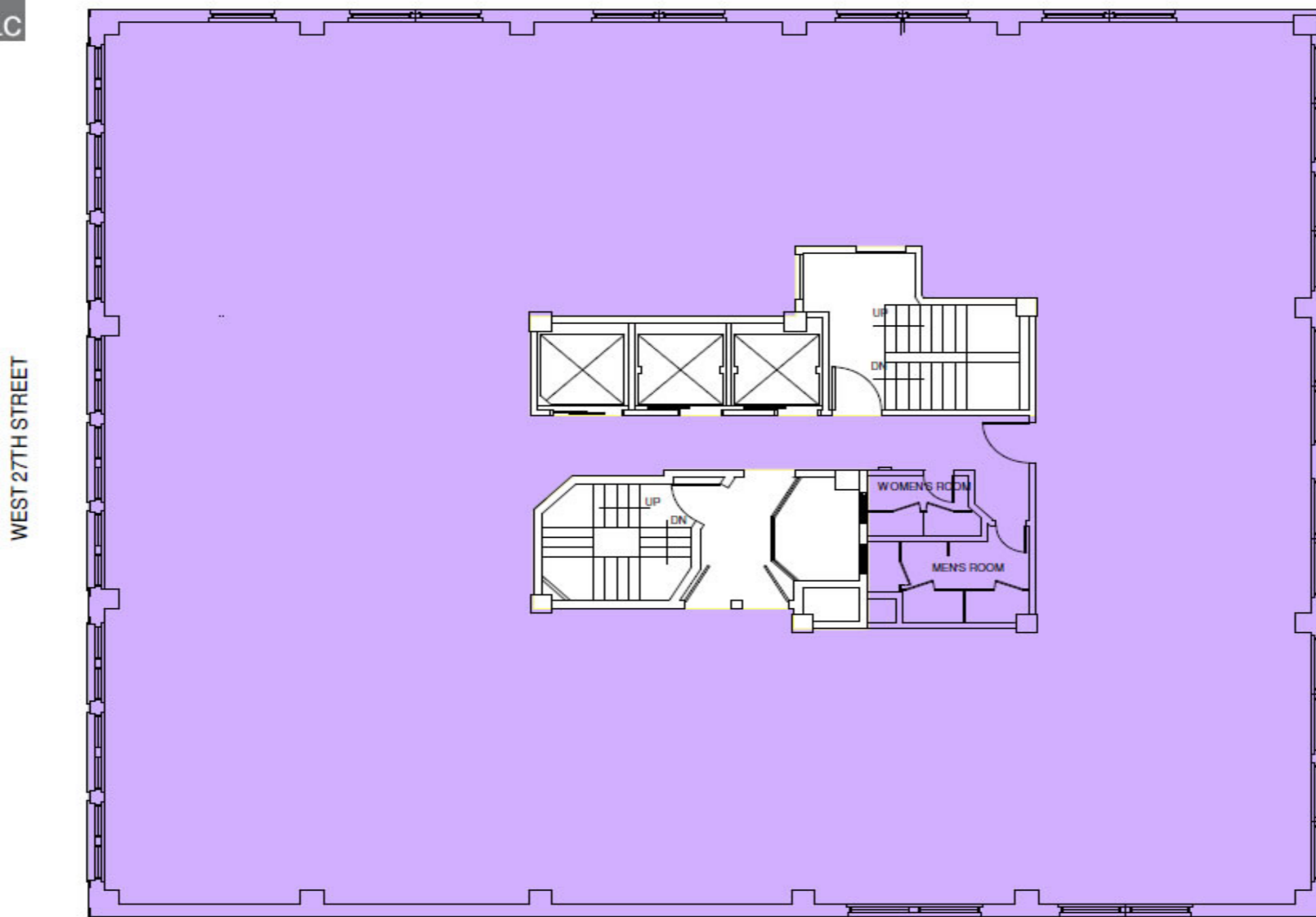
40 East 69th Street

New York, NY 10021

[mkoepfel@koeppelrosen.com](mailto:mkoepfel@koeppelrosen.com)

236 West 27th St

Typical Floor Plan



Note: All dimensions and conditions are approximate and for information only.



40 East 69th Street  
New York, NY 10021  
212-249-1550  
www.koeppelrosen.com

Scale: NTS  
Date: February 8, 2016



For more information call  
1- 212- 249- 1550  
KOEPEL ROSEN  
40 East 69th Street  
New York, NY 10021  
mkoeppe@koeppelrosen.com