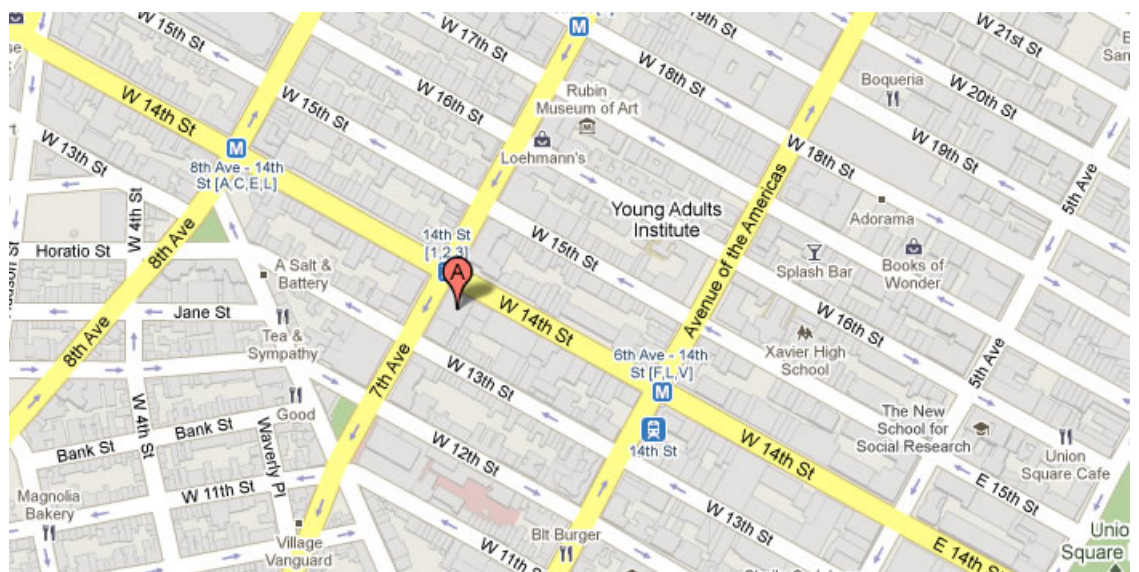




154 WEST 14TH STREET, New York, NY 10011



166626 SF

Up to 38,950 SF Available

This glazed, colored terra cotta office building combines the styles of Art Nouveau and Art Deco. Features attended lobby, new elevator cabs operable windows and subway station at street corner

Built: 1913 Architect: Herman Lee Meader

#### Tenants

MEDICAL BUILDING ASSOCIATES

GROVE/ATLANTIC, INC.

154 W 14TH STREET TENANT LLC

For more information call

1-212-249-1550

KOEPPPEL ROSEN

40 East 69th Street

New York, NY 10021

[mkoeppeel@koeppelrosen.com](mailto:mkoeppeel@koeppelrosen.com)

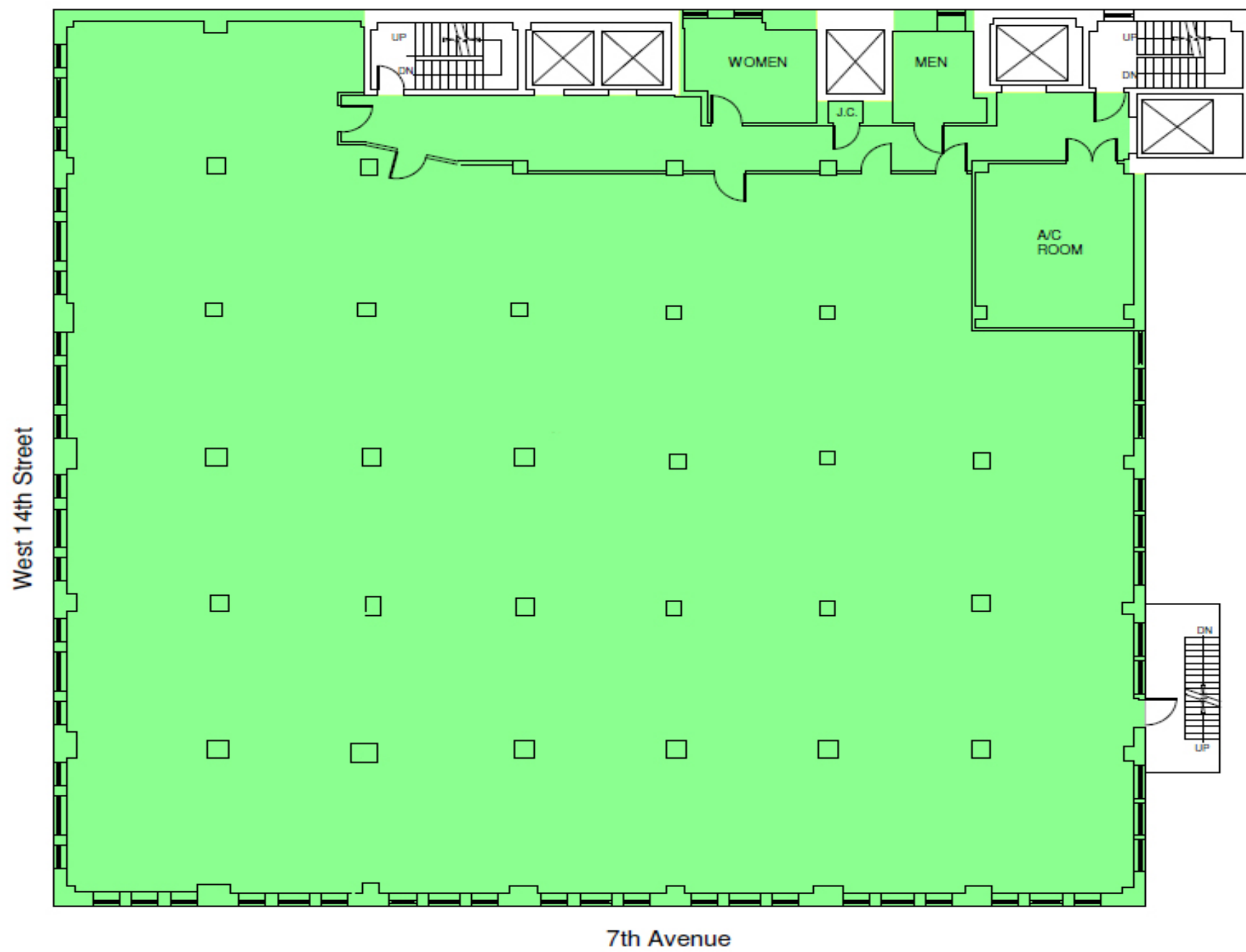




154 WEST 14TH STREET, New York, NY 10011

## 154 West 14th Street

## Typical Floor Plan



Koeppel Rosen LLC

40 East 69th Street  
New York, NY 10021  
212-249-1550  
www.koeppelrosen.com

Note: All dimensions and conditions are approximate and for information only

Scale: NTS

Date: February .18, 2016



For more information call

1- 212- 249- 1550

KOEPPEL ROSEN

40 East 69th Street

New York, NY 10021

mkoeppel@koeppelrosen.com