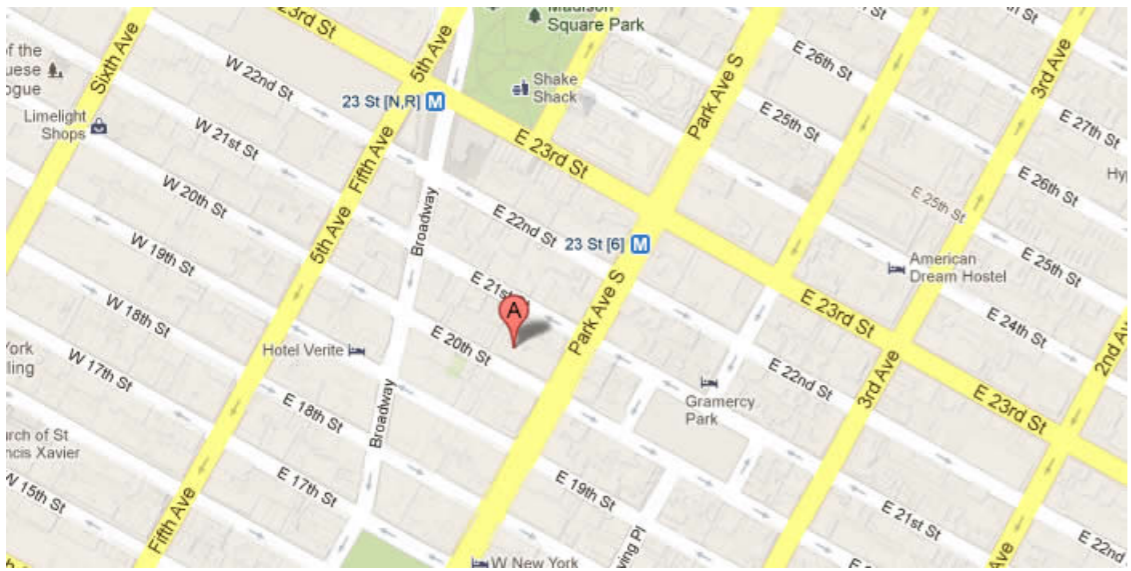




45 EAST 20TH STREET, New York, NY 10003



62856 SF

Up To 5,000 SF Available

Flatiron district office building with street-level retail with attended lobby , 24 hour access and easy access to Bus Lines, Metro/Subway
Built: 1911 Architect: Frederick C. Zobel

Tenants

2045 Studio, Inc.

JONATHAN KIRSCHENFELD ARCHITECT PC

Blue Matrix I LLC

Majesty's Pleasure

Kids in the Game LLC

For more information call

1- 212- 249- 1550

KOEPEL ROSEN

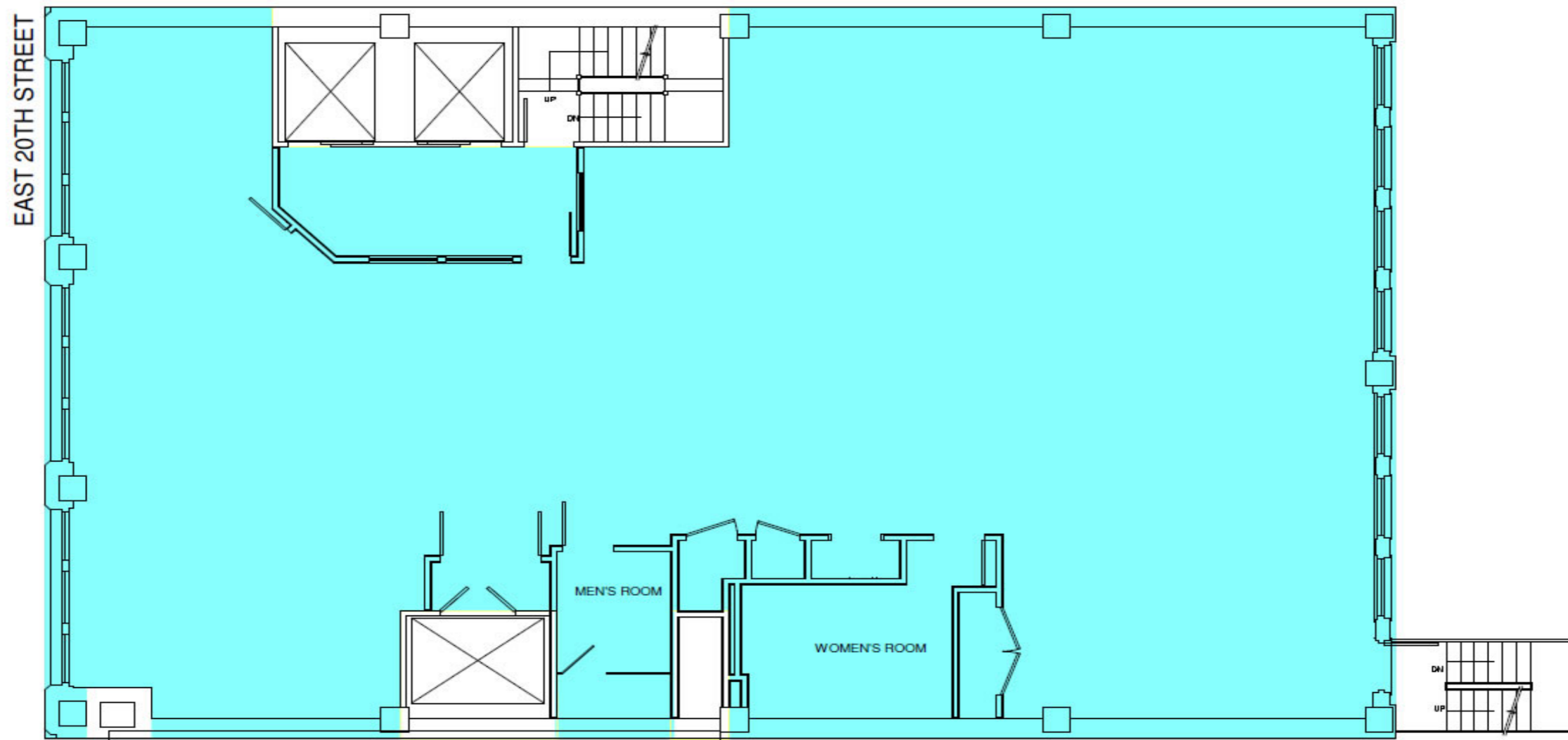
40 East 69th Street

New York, NY 10021

mkoepfel@koeppelrosen.com

45 East 20th Street

Typical Floor Plan



For more information call
1-212-249-1550
KOEPEL ROSEN
40 East 69th Street
New York, NY 10021
mkoeppe@koeppelrosen.com