

1 EAST 33RD STREET, New York, NY 10016



156324 SF

1 block from the Empire State Building
with approximately 15 feet of frontage on East 33rd St
new lobby and 24 hour access

One block from the the B,D,F,M,N,Q,R and PATH trains
Built: 1913 Architect: Maynicke & Franke

Tenants

HIGHLAND ASSOCIATES LTD.

For more information call

1- 212- 249- 1550

KOEPEL ROSEN

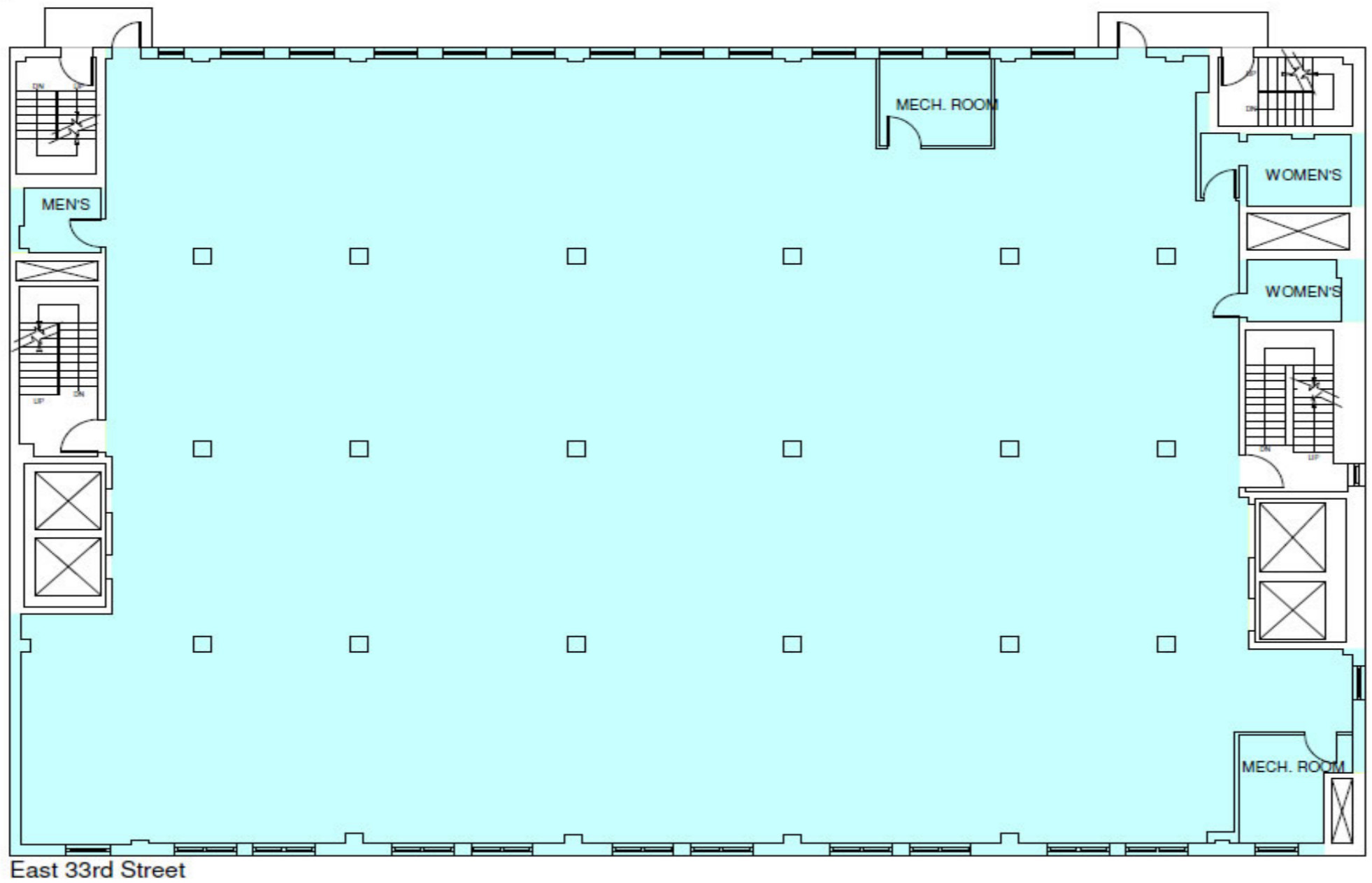
40 East 69th Street

New York, NY 10021

mkoeppel@koeppelrosen.com

1 East 33rd Street

Typical Floor Plan



Note: All dimensions and conditions are approximate and for information only

 Koeppel Rosen LLC
40 East 69th Street
New York, NY 10021
212-249-1550
www.koeppelrosen.com

Scale: NTS
Date: February .1, 2016



For more information call
1- 212- 249- 1550
KOEPEL ROSEN
40 East 69th Street
New York, NY 10021
mkoeppe@koeppelrosen.com