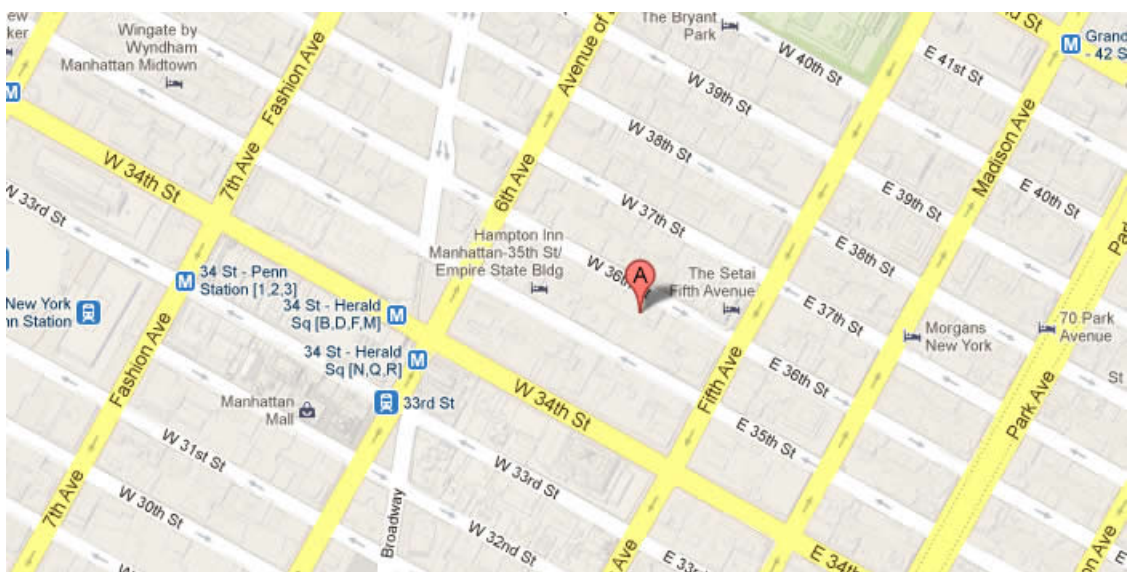




20 WEST 36TH STREET, New York, NY 10018



87264 SF

Up To 2,401 and 4,251 SF Available

Office building with attended lobby

24 hour access and is located steps away from the new Setai Hotel and 5th Ave

Built: 1911 Architect: Samuel Sass

Tenants

AMERICAN FRIENDS OF MAGEN DAVID ADOM

For more information call

1- 212- 249- 1550

KOEPEL ROSEN

40 East 69th Street

New York, NY 10021

[mkoepfel@koeppelrosen.com](mailto:mkoepfel@koeppelrosen.com)

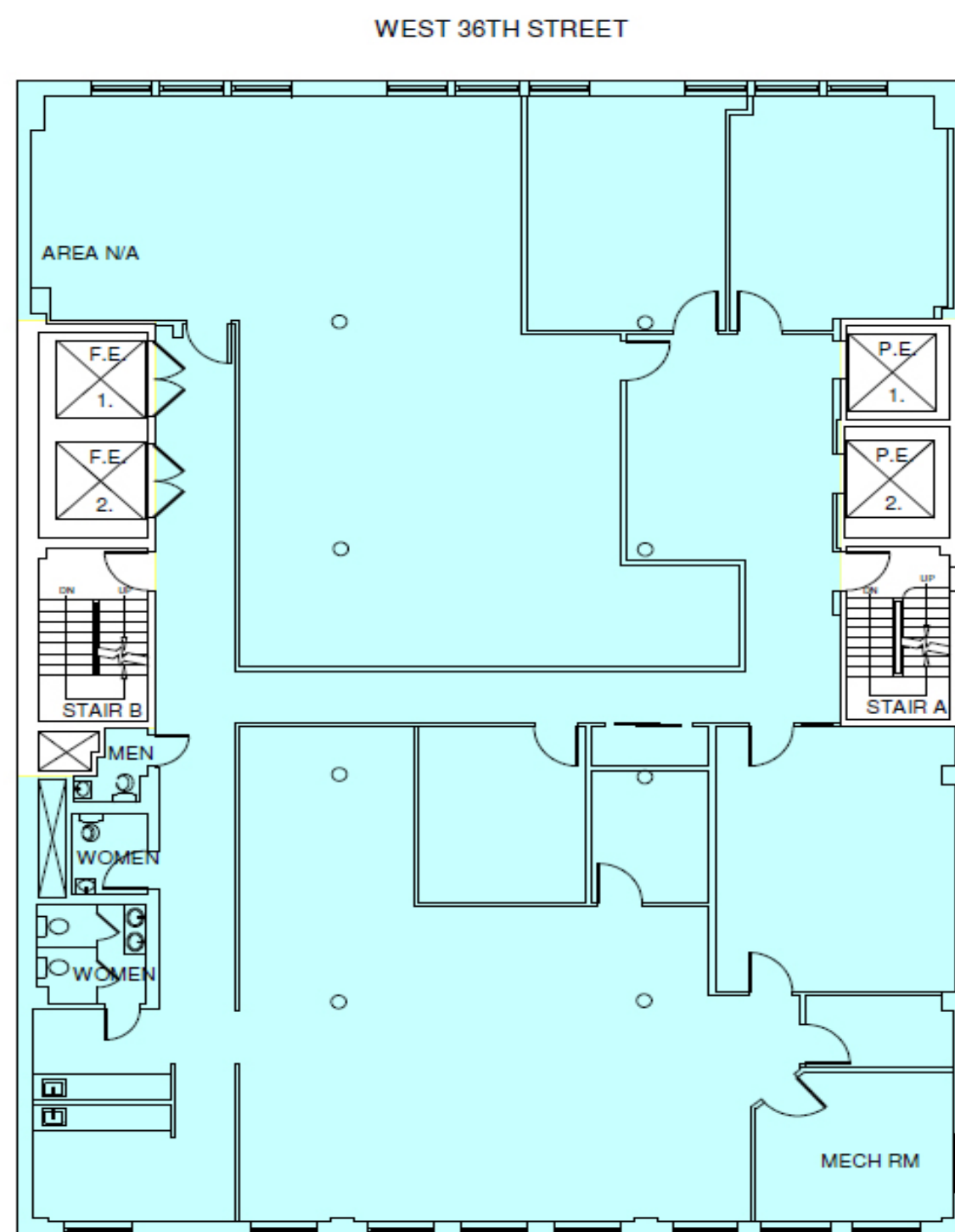


20 WEST 36TH STREET, New York, NY 10018

## 20 West 36th St



## Typical Floor Plan



**Koeppel Rosen LLC**  
40 East 69th Street  
New York, NY 10021  
212-249-1550  
www.koeppelrosen.com

Note: All dimensions and conditions are approximate and for information only

Scale: NTS  
Date: February .10, 2016



For more information call  
1- 212- 249- 1550  
KOEPPEL ROSEN  
40 East 69th Street  
New York, NY 10021  
mkoeppel@koeppelrosen.com